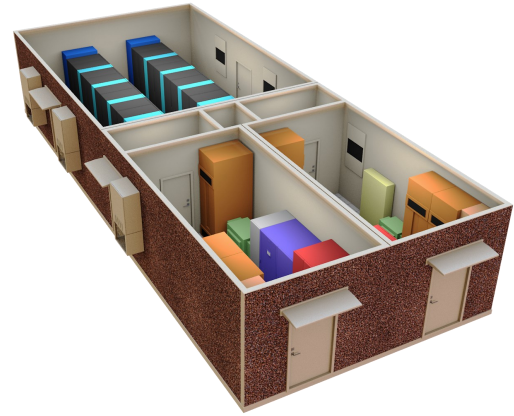


Power of Knowledge



In edge computing environments reliability, stability and longevity is everything! Edge Mission Critical Systems is a formal consortium of best-in-class manufacturers and service providers organized under one roof serving as your single point of contact and one-stop-shop for modular data center projects.

Edge MCS will:

- Save you time, money and the hassle of vetting and interacting with multiple vendors and engineers
- Eliminate the finger pointing by relying on a single point of contact and streamlined processes
- Listen to your stakeholders and engineer customized critical systems solutions; power generation to DCIM to security to N+2 power & cooling redundancy
- Maximize ROI for real estate holdings, space utilization in operational physical plants and equipment investments
- Create reliable Cap Ex or Op Ex budgets for any modular data center project
- Cut through the rhetoric and sales fluff for you
- Bring to market a customized or preconfigured modular data center solution to meet your specific needs

If your organization is in the planning stages of a modular data center project or you'd prefer some expert product-agnostic consultation to help you sort through the pros and cons of MDC competitors contact Edge MCS.

We'll clear the product marketing fog by providing honest and informed answers and solutions. We'll save you significant time, money and frustration by speaking a language that everyone can understand.

We provide consulting on any aspect of your modular data center project whether you are comparing existing modular data center (MDC) offerings or designing your own or planning future projects.

For more information, call Edge MCS: (804) 379-3092.

Products & Services

Single point of contact and one-stop-shop offering you:

Binary Bunkers which are preconfigured, fully engineered, PE stamped MDC systems, 15Kw per rack, hardened 10-rack or 20-rack configurations. Rugged enclosure built to withstand extreme conditions.

- N+1 redundancy (10-rack); Hybrid N+2 (20-rack)
- Save time to market, spend less, quickly recoup ROI
- Rapid deployment (12-14 week average, PO to pad)
- Unparalleled efficiency, rigidity, stability & longevity (easily scalable platform)
- 10 year enclosure warranty / 20 year option available
- UL-752 level 4 ballistic standards (level 8 available)
- Fire Detection & Suppression (NFPA-2001, FM-200 total flooding systems available)

Project Management to keep things on time and under budget; highly credentialed & industry recognized talent.

Civil Engineering services for site preparation.

Construction and Delivery of engineered custom or preconfigured lightweight concrete MDC enclosures.

Fuel Polishing and Management is too often overlooked but critical to your power operations.

Emissions After Treatment keeps you in compliance with EPA regs; data log to prove it. Cost-effective, reliable.

Engine Generators, Automatic Transfer Switches, PDU's and UPS equipment; we engineer, locate, resell and deliver individual components or full solutions, agnostic approach to selection, and extremely competitive pricing.

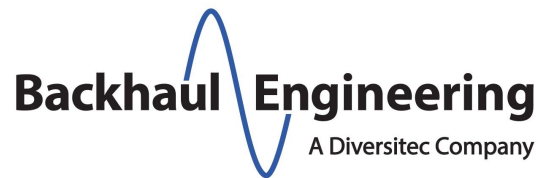


About Diversitec Family of Companies

Diversitec is a 25-year-old, TL-9000 certified, privately held Richmond, Virginia based company specializing in DC Power, batteries, logistics, kitting, virtual warehousing, and new, or hard-to-find manufacturer discontinued telecom parts such as switches, transport gear, and line cards. With respect to DC Power, Diversitec is a designated Eltek power electronics premier DC power integrator for the United States; only one of five companies to receive this designation. In addition to Eltek products, Diversitec is a multi-year award-winning integrator for GE. We also offer Vertiv (formerly Emerson) and Alpha products.

With subject matter experts on staff, we design, engineer, and provide turnkey DC power back-up solutions.

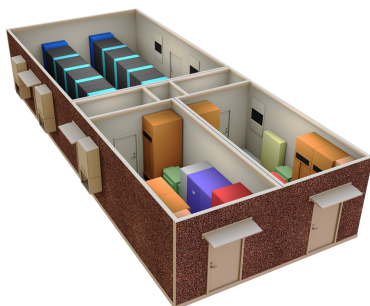
The company also maintains millions in secondary market inventory that is new, new old stock (NOS), repaired, or refurbished; we cover nearly 50 years of telecom equipment from hundreds of manufacturers. Diversitec is under multi-year contracts with customers such as Verizon, AT&T, Frontier, Level 3, and Lighttower. We integrate legacy equipment into modern communications infrastructure and replace worn out parts for some of the world's largest telecom companies. We serve the telecommunications, healthcare, technology, rail, education, utility, and emergency operations markets. Diversitec is the parent company for subsidiaries Edge MCS, LLC and Backhaul Engineering, LLC.



Backhaul Engineering is a single-source wireless engineering services company with more than a decade of industry experience. The wireless industry counts on us to provide high-quality engineering, design, and support services. National and local clients value our experience in the areas of path engineering, spectrum management, interference mitigation and troubleshooting as well as our unmatched installation management services. Designs are correct the first time, every time; clients benefit from trouble-free operation and increased up time.



Edge Mission Critical Systems (Edge MCS) is a privately held company based in Richmond, Virginia and a global OEM for the Binary Bunker and custom line of modular data centers. Edge MCS offers a totally engineered, PE-stamped modular data center specifically designed for edge network applications where customers require redundancy, excellent power density and highly efficient cost of ownership. All Edge MCS modular data centers are made of rigid, lightweight concrete unmatched in durability and energy efficiency. They contain well-known and internationally available components supported by and available through, Edge MCS.



Contact

Edge Mission Critical Systems, LLC

14321 Sommerville Court
Midlothian, VA 23113

Phone: (804) 379-3092 | **Cell:** (804) 310-6581

Email: Robert.Peck@EdgeMCS.com
www.EdgeMCS.com