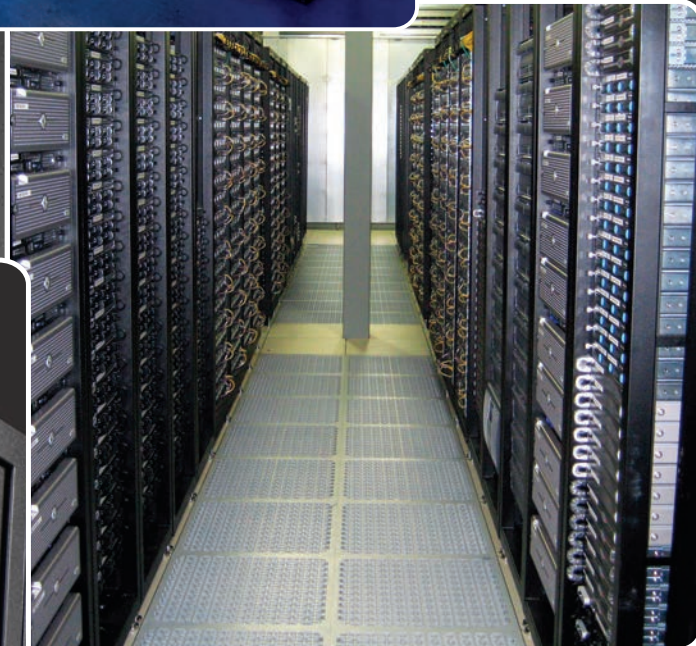
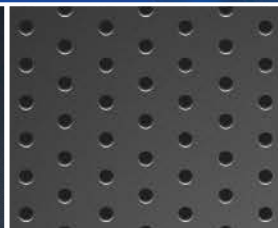


DAMAC

PREMIUM DATACENTER PRODUCTS

IT / Data Center Solutions

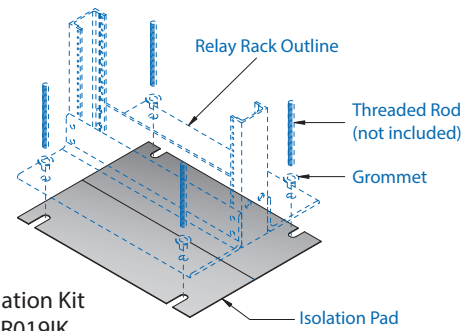


MADE IN U.S.A.

Rack Grounding

Use a bus bar to ground and isolate electrical currents of rack-mounted equipment.

Part#	Description	Ship Wt.
ARR019IK	19" Relay Rack Isolation Kit	3 lb.
ARRGB	Relay Rack Grounding Block	1 lb.
ARRGS	Relay Rack Grounding Strap	1 lb.
AGRB019	19" Rackmount Grounding Bar	2 lb.
AGRB023	23" Rackmount Grounding Bar	3 lb.
AGWB010	10" x 4" Wallmount Bus Bar Kit	5 lb.
AGWB020	20" x 4" Wallmount Bus Bar Kit	10 lb.

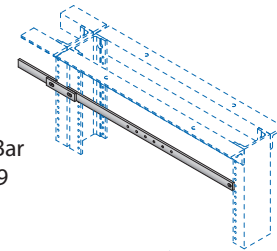


Rack Isolation Kit
Part# ARR019IK

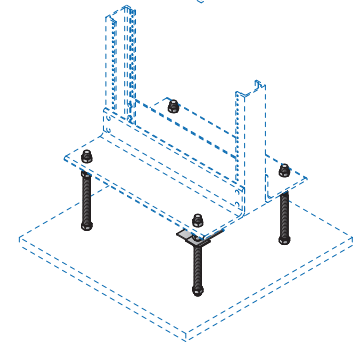
Rack Bracing and Mounting

Several kits available to floor mount and brace free standing Two Post and Tandem Racks.

Part#	Description	Ship Wt.
ARRCP3	Relay Rack Coupler Kit w/ 3" Spacer	2 lb.
ARREK	Relay Rack Seismic Bracing Kit (rod not incld.)	3 lb.
ARRSK-3	Relay Rack Seismic Gusset Kit, 4 PC	12 lb.
ARRFCK-58	Concrete Floor Mounting Kit w/ 5/8" Hardware	3 lb.
ARRFRK-18	Raised Floor Mounting Kit w/ 5/8" Hardware	6 lb.
PLB12RS-3	12"W Ladder to Rack Mounting Kit, J-Bolts Inclcd.	3 lb.
PLB18RS-3	18"W Ladder to Rack Mounting Kit, J-Bolts Inclcd.	4 lb.



Rack Ground Bar
Part# AGRB019

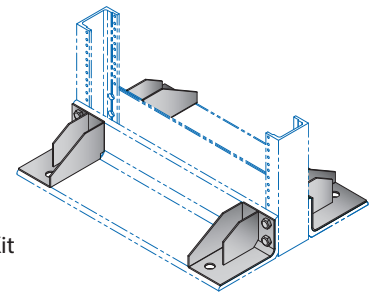
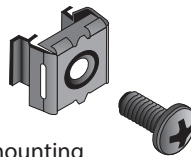


Raised Floor Kit
Part# ARRFRK-18

Mounting Hardware

Additional M6 mounting hardware packs for rack mounting equipment to the cabinet mounting rails.

Part#	Description	Weight
AHPF1032-30	30pc, 10-32 screw	1 lb.
AHPF1032CN-30	30pc, 10-32 cage-nut	1 lb.
AHPFM6-30	30pc, M6 screw	1 lb.
AHPFM6CN-30	30pc, M6 cage-nut	1 lb.
AHPFCN-30	30pc, M6 screw w/ cage-nut	2 lb.
AHPFCN-100	100pc, M6 screw w/ cage-nut	6 lb.



Seismic Gusset Kit
Part# ARRSK

FIG. 1

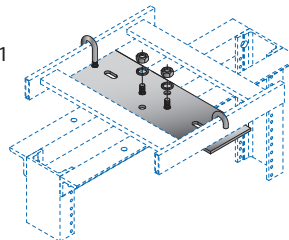
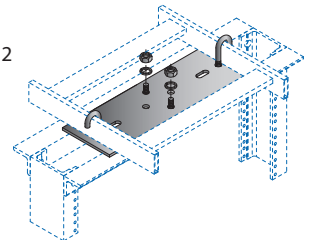


FIG. 2



Runway/Rack Mounting Kit

Vertical Cable Manager

Vertical Cable Manager Rack Systems

Vertical cable managers provide structured vertical cable management. Managers mount to the sides or between Two Post Racks or Tandem Racks. Promotes a clean and organized cable system for patch cords and general cabling.

The vertical cable channel includes snap-shut metal swing gates. The swing gates are set 12 in. apart for clear viewing and maintaining bend radius. Molded plastic edge protectors along the aluminum frame protect cable jackets.

Application: Networking
Structured Cabling
Two Post and Tandem Racks

Model Sizes: Height: 84.00"
Width: 3.65", 6.00"
Depth: 6.38", 12.75"

Specifications:

- Provides easy rack cable management
- Constructed of strong, light-weight aluminum
- Single or double-sided sections available
- Narrow or wide channel models
- Molded plastic edge protectors throughout
- Metal snap-shut swing gates
- Convenient cable pass-through ports
- Integrated lances throughout for cable tie-down
- Metal removable cover, optional
- Clear or black finishes standard
- Shipped fully assembled in one box
- Mounts to other popular vendor racks

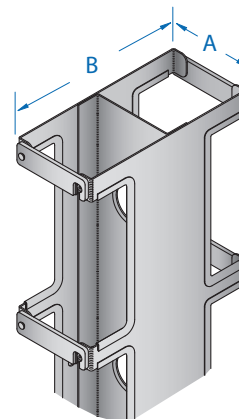
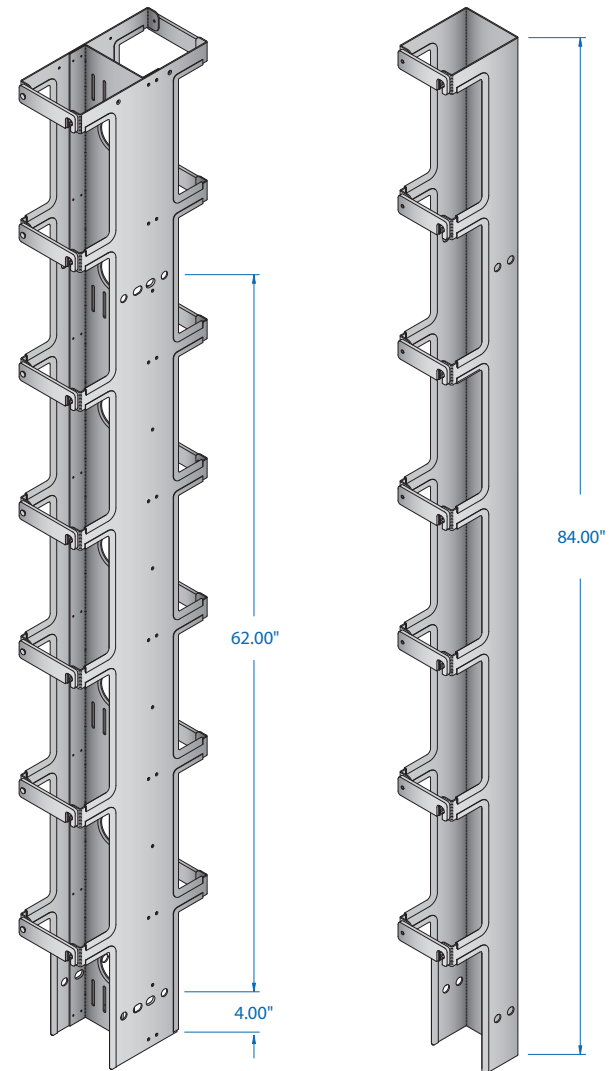
Vertical Manager Part Numbers

PART #	Height	Sided	A-width	B-depth	Color	Ship Wt.
MRS084N	84.00"	Single	3.65"	6.38"	Clear	15 lb.
MRS084N-3	84.00"	Single	3.65"	6.38"	Black	15 lb.
MRS084W	84.00"	Single	6.00"	6.38"	Clear	16 lb.
MRS084W-3	84.00"	Single	6.00"	6.38"	Black	16 lb.
MRD084N	84.00"	Double	3.65"	12.75"	Clear	18 lb.
MRD084N-3	84.00"	Double	3.65"	12.75"	Black	18 lb.
MRD084W	84.00"	Double	6.00"	12.75"	Clear	19 lb.
MRD084W-3	84.00"	Double	6.00"	12.75"	Black	19 lb.

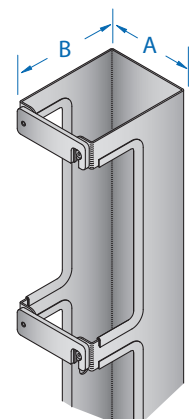
Cover Metal lift-off covers

PART #	Fits Manager#	Color	Ship Wt.
MRC084N-3	MRD084N, MRS084N	Black	8 lb.
MRC084W-3	MRD084W, MRS084W	Black	8 lb.

Use with Two Post or Tandem Racks.
Fits multi-vendor racks.



Double: Model MRD



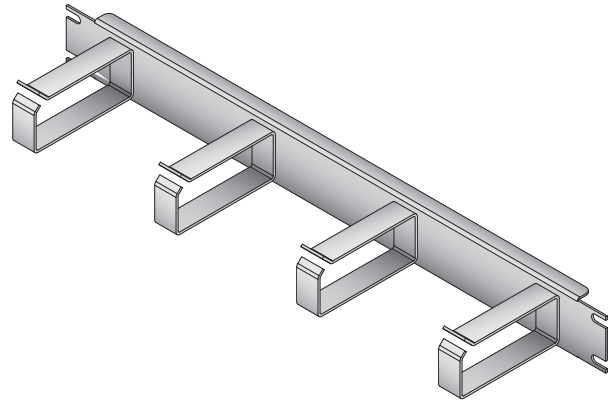
Single: Model MRS

19" Horizontal Manager

Organize your horizontal cable runs with this cost effective solution. Constructed of 16 GA sheet metal, promotes durability compared to cheap plastic versions. The manager features a smooth radius edge that adds vital protection to the cables. Easy to install in any 19" EIA rack or cabinet. An optional snap on metal cover is available. Finished in durable epoxy powder-coat.

Part #	Height	Width	Depth	Color	Ship Wt.
F533-1901	1U	19"	3.50"	Black	2.5 lb.
F533-1902	2U	19"	3.50"	Black	2.5 lb.

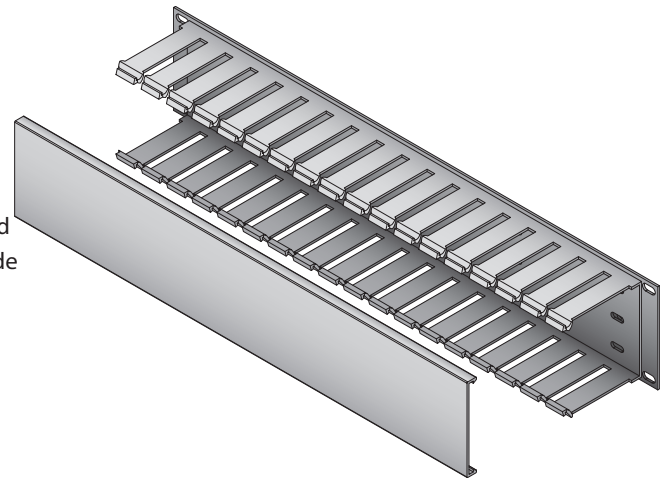
MCC1901 Cover for Part: F533-1901
MCC1902 Cover for Part: F533-1902



19" Cable Management Panels

Panels are 19" rackable and are perfect for managing Coax, Fiber Optic and multimedia cables. The versatile cable channel maintains proper cable bend radius, and is available in depths of 3" or a compact 2" depth. All panels include a snap on cover.

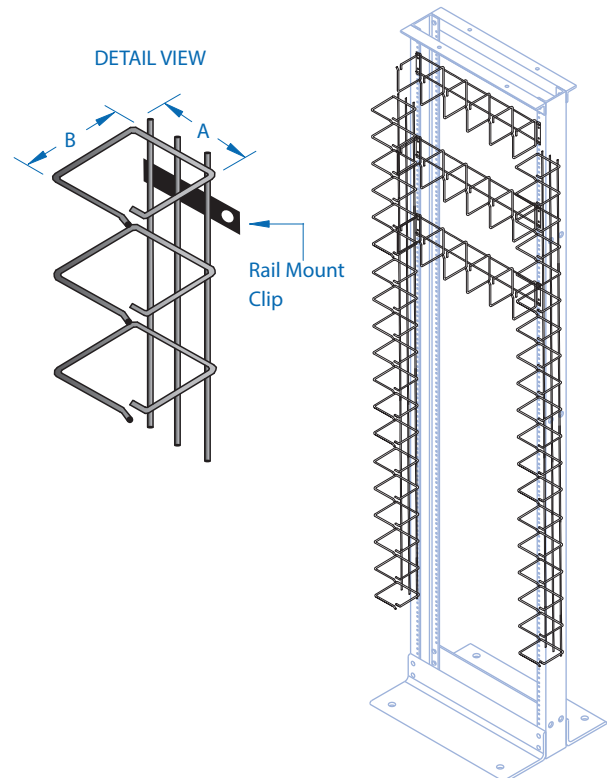
Part #	Height	Width	Depth	Color	Ship Wt.
F533-P1932	2U	19"	2.25"	Black	2.5 lb.
F533-P1933	2U	19"	3.25"	Black	2.5 lb.



CableControl™ Rack Systems

CableControl is a cost effective vertical cable management solution. Utilizing a patented wire-form design, makes organizing and bundling of cables simple. The top and bottom are open for overhead or raised floor cable runs. The full length D-Ring channel is constructed of rolled steel promoting proper bend radius and a smooth protective surface. Attaches to the mounting rails surface via a universal mounting bracket. Finished in

Part #	Height	A-width	B-depth	Type	Color	Ship Wt.
F533-001-8	18.80"	2.50	2.50"	19" Rackable	Black	2 lb.
F533-002-8	18.80"	3.50"	3.50"	19" Rackable	Black	2 lb.
F533-003-8	18.80"	4.75"	4.75"	19" Rackable	Black	3 lb.
F533-004-8	18.80"	4.75"	5.50"	19" Rackable	Black	3 lb.
F533-015-8	68.00"	2.50"	2.50"	Vertical Mnt.	Black	5 lb.
F533-012-8	68.00"	3.50"	3.50"	Vertical Mnt.	Black	6 lb.
F533-014-8	68.00"	4.75"	5.50"	Vertical Mnt.	Black	7 lb.



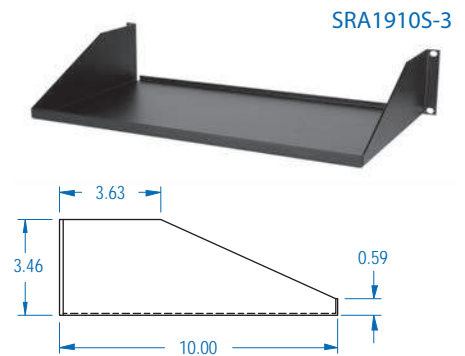
Rack Shelves

Rack-Mount Shelves Rack Systems

A variety of rack shelf options are available in 19" rack mount configurations. Shelves are universal and will fit third party racks.

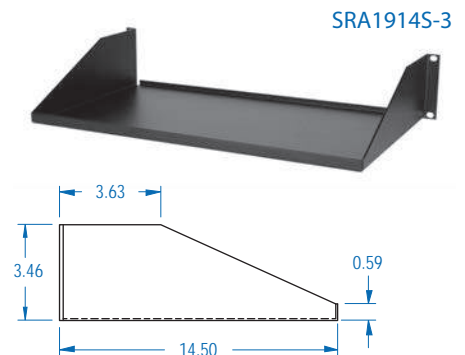
10" Deep Single Sided Shelves

Part #	Rackable	HxWxD	Type	Color	Ship Wt.
SRA1910S	19"	2U x 19 x 10	Aluminum, Solid, 50LB Cap.	Clear	5 lb.
SRS1910S-3	19"	2U x 19 x 10	Steel, Solid, 100LB Cap.	Black	6 lb.
SRA1910P	19"	2U x 19 x 10	Aluminum, Perf, 50LB Cap.	Clear	5 lb.
SRA1910P-3	19"	2U x 19 x 10	Aluminum, Perf, 50LB Cap.	Black	5 lb.



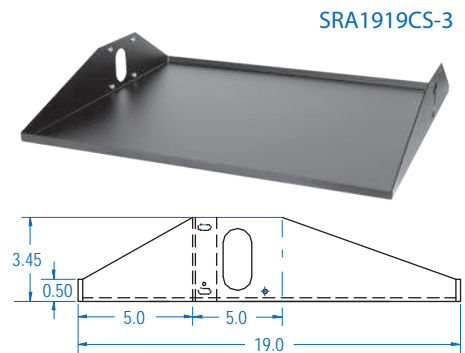
14" Deep Single Sided Shelves

Part #	Rackable	HxWxD	Type	Color	Ship Wt.
SRA1914S	19"	2U x 19 x 14.5	Aluminum, Solid, 50LB Cap.	Clear	7 lb.
SRS1914S-3	19"	2U x 19 x 14.5	Steel, Solid, 100LB Cap.	Black	8 lb.
SRA1914P	19"	2U x 19 x 14.5	Aluminum, Perf, 50LB Cap.	Clear	7 lb.
SRS1914P-3	19"	2U x 19 x 14.5	Steel, Perf, 100LB Cap.	Black	8 lb.



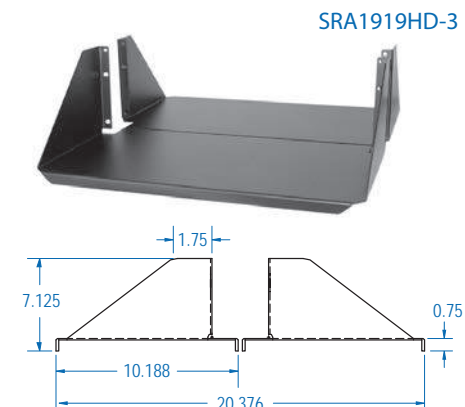
19" Deep Double Sided Shelves, 1pc

Part #	Rackable	HxWxD	Type	Color	Ship Wt.
SRA1919CS	19"	2U x 19 x 19	Aluminum, Solid, 50LB Cap.	Clear	10 lb.
SRA1919CS-3	19"	2U x 19 x 19	Aluminum, Solid, 50LB Cap.	Black	10 lb.
SRS1919CS-3	19"	2U x 19 x 19	Steel, Solid, 150LB Cap.	Black	11 lb.
SRA1919CP	19"	2U x 19 x 19	Aluminum, Perf, 50LB Cap.	Clear	10 lb.
SRA1919CP-3	19"	2U x 19 x 19	Aluminum, Perf, 50LB Cap.	Black	10 lb.



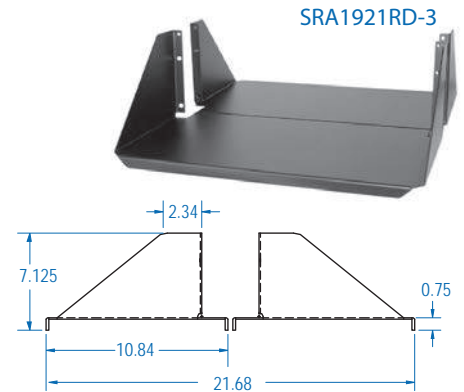
19" Deep HD Double Sided Shelves, 2pc

Part #	Rackable	HxWxD	Type	Color	Ship Wt.
SRA1919HD	19"	4U x 19 x 19	Aluminum, Solid, 200LB Cap.	Clear	12 lb.
SRA1919HD-3	19"	4U x 19 x 19	Aluminum, Solid, 200LB Cap.	Black	12 lb.



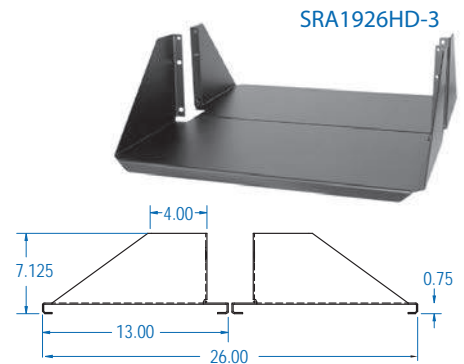
21" Deep Double Sided Shelves, 2pc

Part #	Rackable	HxWxD	Type	Color	Ship Wt.
SRA1921RD	19"	4U x 19 x 21	Aluminum, Solid, 100LB Cap.	Clear	11 lb.
SRA1921RD-3	19"	4U x 19 x 21	Aluminum, Solid, 100LB Cap.	Black	11 lb.
SRA1921RDP	19"	4U x 19 x 21	Aluminum, Perf, 100LB Cap.	Clear	11 lb.



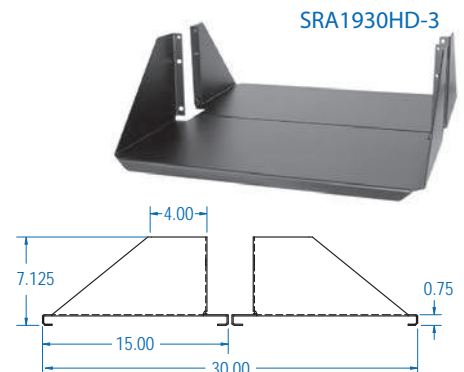
26" Deep HD Double Sided Shelves, 2pc

Part #	Rackable	HxWxD	Type	Color	Ship Wt.
SRA1926HD	19"	4U x 19 x 26	Aluminum, Solid, 200LB Cap.	Clear	13 lb.
SRA1926HD-3	19"	4U x 19 x 26	Aluminum, Solid, 200LB Cap.	Black	13 lb.



30" Deep HD Double Sided Shelves, 2pc

Part #	Rackable	HxWxD	Type	Color	Ship Wt.
SRA1930HD	19"	4U x 19 x 30	Aluminum, Solid, 200LB Cap.	Clear	14 lb.
SRA1930HD-3	19"	4U x 19 x 30	Aluminum, Solid, 200LB Cap.	Black	14 lb.



Fixed & Roll-Out Keyboard Trays

Part #	Rackable	HxWxD	Type	Color	Ship Wt.
SRS19KF-3	19"	2U x 19 x 8.5	Fixed Keyboard	Black	7 lb.
SRA19KS	19"	2U x 19 x 8	Roll-Out Keyboard	Clear	7 lb.
SRA19KS-3	19"	2U x 19 x 8	Roll-Out Keyboard	Black	7 lb.
SRA19KSM	19"	2U x 19 x 8	Roll-Out Keybrd w/ Mouse	Clear	8 lb.
SRA19KSM-3	19"	2U x 19 x 8	Roll-Out Keybrd w/ Mouse	Black	8 lb.

