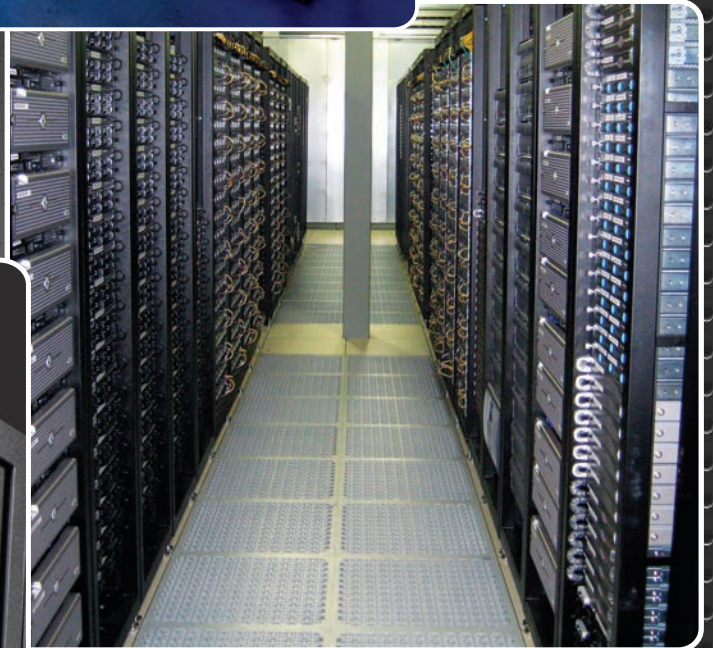
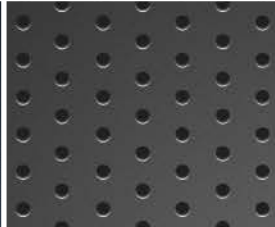


DAMAC

PREMIUM DATACENTER PRODUCTS

IT / Data Center Solutions



MADE IN U.S.A.

Tandem Rack 45/51U

Tandem™ Series Dual Equipment Rack

The Tandem Rack provides the superior strength and mounting flexibility in a cabinet, but in an open frame design. The unique dual-rack uprights are an ideal solution for rack mounting 19 in. equipment such as servers, switches and other equipment where a two post rack can not accommodate adequate mounting support. The open frame design enhances airflow, cabling and equipment mounting. Product ships unassembled and individually

Application: General Purpose
Server/Networking
Structured Cabling

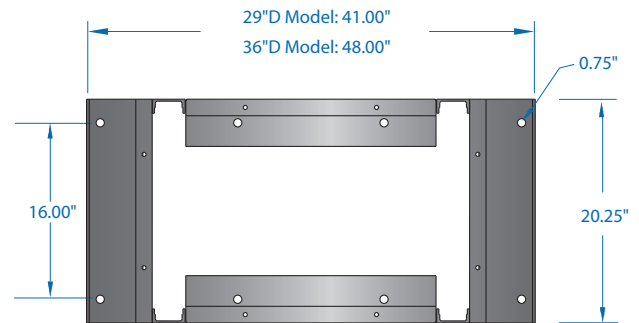
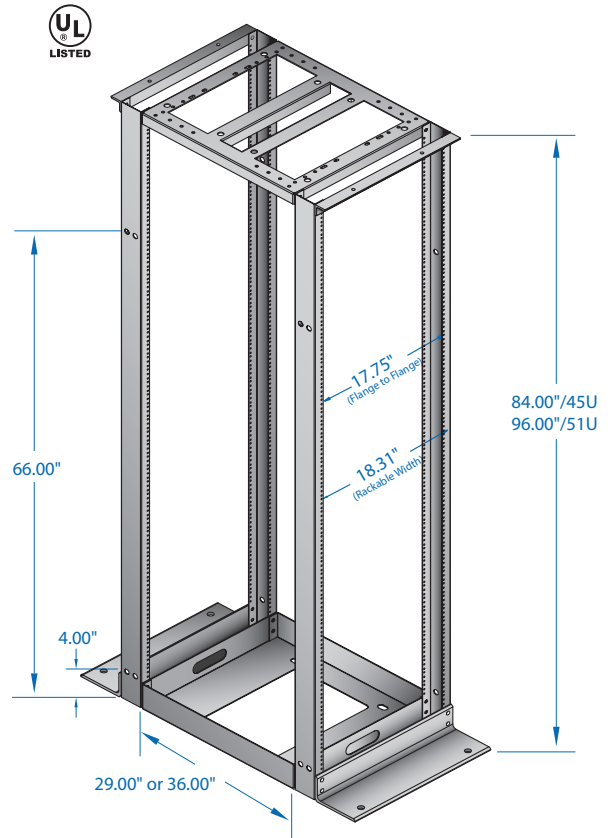
Model Sizes: Height: 84", 96"
Width: 24"
Depth: 29", 36"
Rails: 12-24, M6 Cage Nut

Specifications:

- Weight capacity 2000 lbs.
- 12-24 Tapped Model: 6061-T6 aluminum extrusion
- M6 Cage-Nut Model: 14 gauge steel
- 19" rack-mount width
- Two sets of mounting rails w/ EIA spacing: 5/8 x 5/8 x 1/2
- 12-24 threaded or cage-nut mounting provisions
- Mounting rails are tapped on both sides
- Double sided RMU markings on both sides of mounting rails
- Side channels include cable manager mounting holes
- UL™ Listed
- UPS or FedEx shippable, one container
- Easily assembled, hardware included
- Black epoxy powder-coat finish

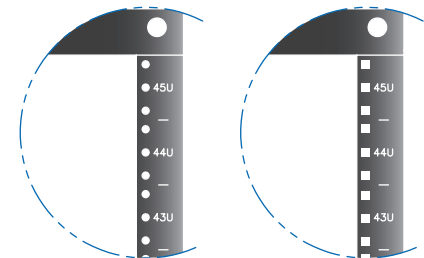
Tandem Rack Part Numbers

PART #	Rail Type	Height	RMU	Depth	Color	Ship Wt.
R4A19084B-3MU	12-24 Tap	84"	45u	29	Black	100 lb.
R4A19084D-3MU	12-24 Tap	84"	45u	36	Black	110 lb.
R4A19096B-3MU	12-24 Tap	96"	51u	29	Black	114 lb.
R4A19096D-3MU	12-24 Tap	96"	51u	36	Black	124 lb.
R4S19084CND-3MU	Cage Nut	84"	45u	29	Black	100 lb.
R4S19084CND-3MU	Cage Nut	84"	45u	36	Black	110 lb.
R4S19096CND-3MU	Cage Nut	96"	51u	29	Black	114 lb.
R4S19096CND-3MU	Cage Nut	96"	51u	36	Black	124 lb.



TOP VIEW

Double Sided RMU Marked Rail



Tapped Rail

Cage-Nut Rail

Server/Networking/Open/Frames

Two Post Equipment Rack

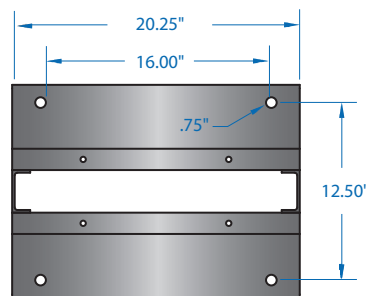
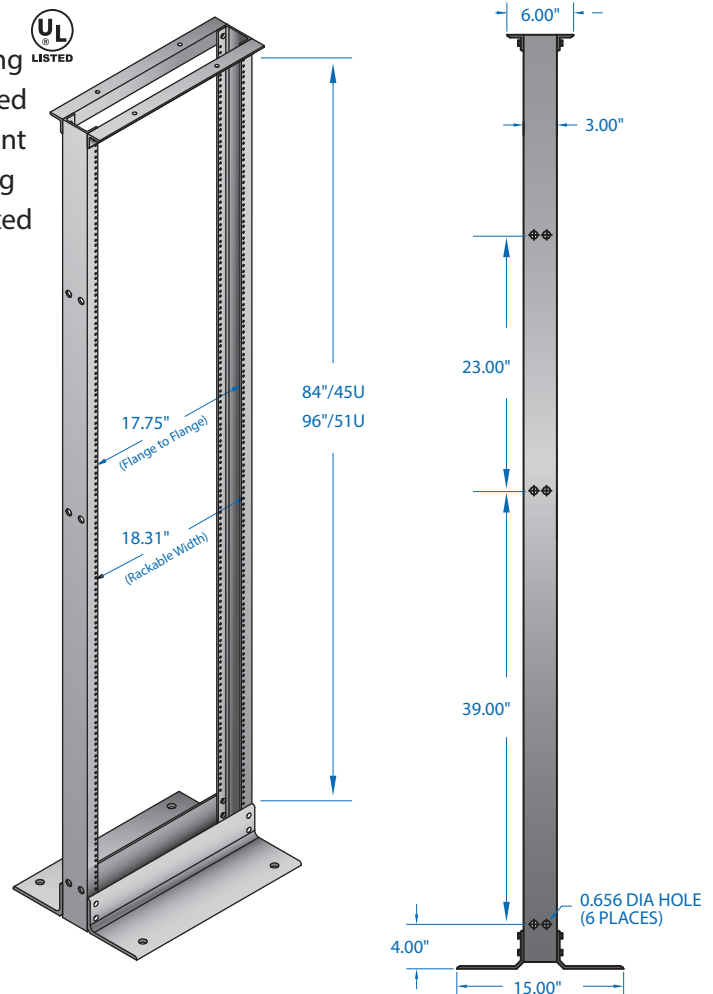
Two Post Rack's are a vital component to any structured cabling installation. This durable equipment rack provides unsurpassed strength and stability for supporting 19" rackable equipment such as patch panels, servers, switches and other networking equipment. Product ships unassembled and individually boxed for quick and convenient shipping and job-site handling.

Application: General Purpose
Networking
Structured Cabling

Model Sizes: Height: 84", 96"
Width: 24"
Rails: 12-24, M6 Cage Nut

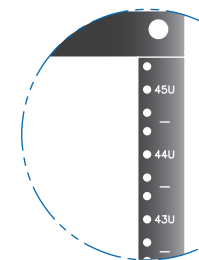
Specifications:

- Weight capacity: RRA @1000 lbs. / REA @ 1500 lbs.
- 12-24 Tapped Model: 6061-T6 aluminum extrusion
- 19" rack-mount width
- Upright channel widths: 3.00" and 6.00"
- Two sets of mounting rails w/ EIA spacing: 5/8 x 5/8 x 1/2
- 12-24 threaded or cage-nut mounting provisions
- Mounting rails are tapped on both sides
- Double sided RMU markings on both sides of mounting rails
- Side channels include cable manager mounting holes
- UL™ Listed
- UPS or FedEx shippable, one container
- Easily assembled, hardware included
- Black epoxy powder-coat finish
- Clear finish, milled aluminum *special order



BOTTOM

Double Sided RMU Marked Rail



Tapped Rail

Two Post Rack Part Numbers

PART #	Channel	Height	RMU	Rail Type	Color	Ship Wt.
RRA19084-3MU	3.00" Deep	84"	45u	12-24 Tap	Black	35 lb.
REA19084-3MU	3.00" Deep	84"	45u	12-24 Tap	Black	35 lb.
RRA19096-3MU	3.00" Deep	96"	51u	12-24 Tap	Black	40 lb.
RA619084-3MU	6.00" Deep	84"	45u	12-24 Tap	Black	40 lb.
RA619096-3MU	6.00" Deep	96"	51u	12-24 Tap	Black	45 lb.

Color Option: remove (-3MU) in part# to designate "clear" finish

Seismic Two Post Rack

Seismic Two Post Equipment Rack

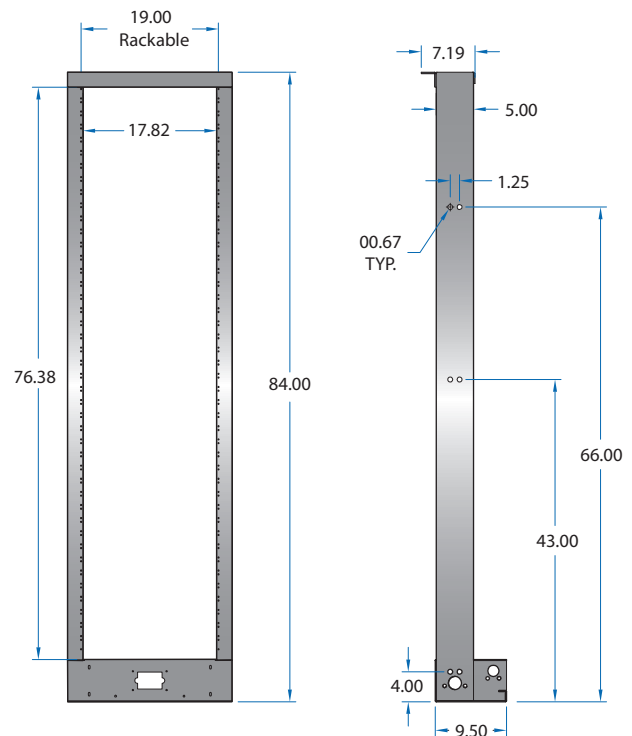
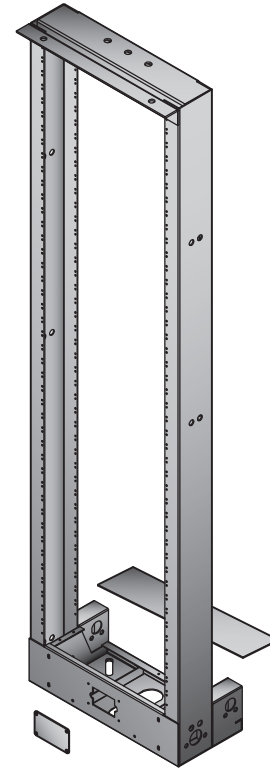
Damac's Seismic Rack is designed to support networking equipment in seismic prone areas. The enhanced rack construction features a fully welded 11 gauge steel design, able to withstand the motion created during a seismic event. Installing a seismic rack ensures no down-time to the mounted equipment due to seismic vulnerability. Supports 19 in. EIA-310-D rack mounted equipment.

Application: Government
Military
Seismic Prone Locations
Mission Critical Services
Telecommunications

Model Size: Height: 84"
Width: 24"
Depth: 06"
Rails: 12-24 Tapped

Specifications:

- Meets Seismic Requirements
- Weight capacity 1000 lbs.
- Fully welded 11 GA steel construction
- 19" EIA width
- Rack uprights are tapped on both sides
- 12-24 UNC threaded mounting provisions
- EIA universal hole pattern: 5/8"-5/8"-1/2"
- EIA-310-D Compliant
- Side channels include cable manager mounting holes
- Black epoxy powder-coat finish
- Full line of shelves and accessories available



Seismic Two Post Rack Part Number

PART #	Channel	Height	RMU	Rail Type	Color	Ship Wt.
RSS19084-3	6.00" Deep	84"	45U	12-24 Tap	Black	85 lb.